

Water Resources Assessment

Environmental sampling for the water resources assessment has been undertaken over a large area generally between Wingen and Murrurundi. Regionally some 69 groundwater sites have been sampled. Private landholders have been closely involved in the water sampling and have taken up the company's offer to have their water bores sampled. The information gathered in this process has been added to the comprehensive data already obtained. The map of the Regional Water Sampling Sites gives an indication of the extent of the sampling conducted.

Within the immediate study area, over one hundred holes have been drilled and 49 of these have been converted into piezometers to allow ongoing measurement of the water depth and quality at the site. Nine surface water sites have also been routinely monitored for a number of different water quality characteristics. These sites are shown in the second map Project Area Water Sampling Sites. At some of these sites, monitoring has been ongoing continuously since 2002.

The water resources assessment will identify:

- Ground and surface water responses to open cut mining
- The potential impacts on the Pages River and Kingdon Ponds
- The potential impact on ground and surface water quality and quantity

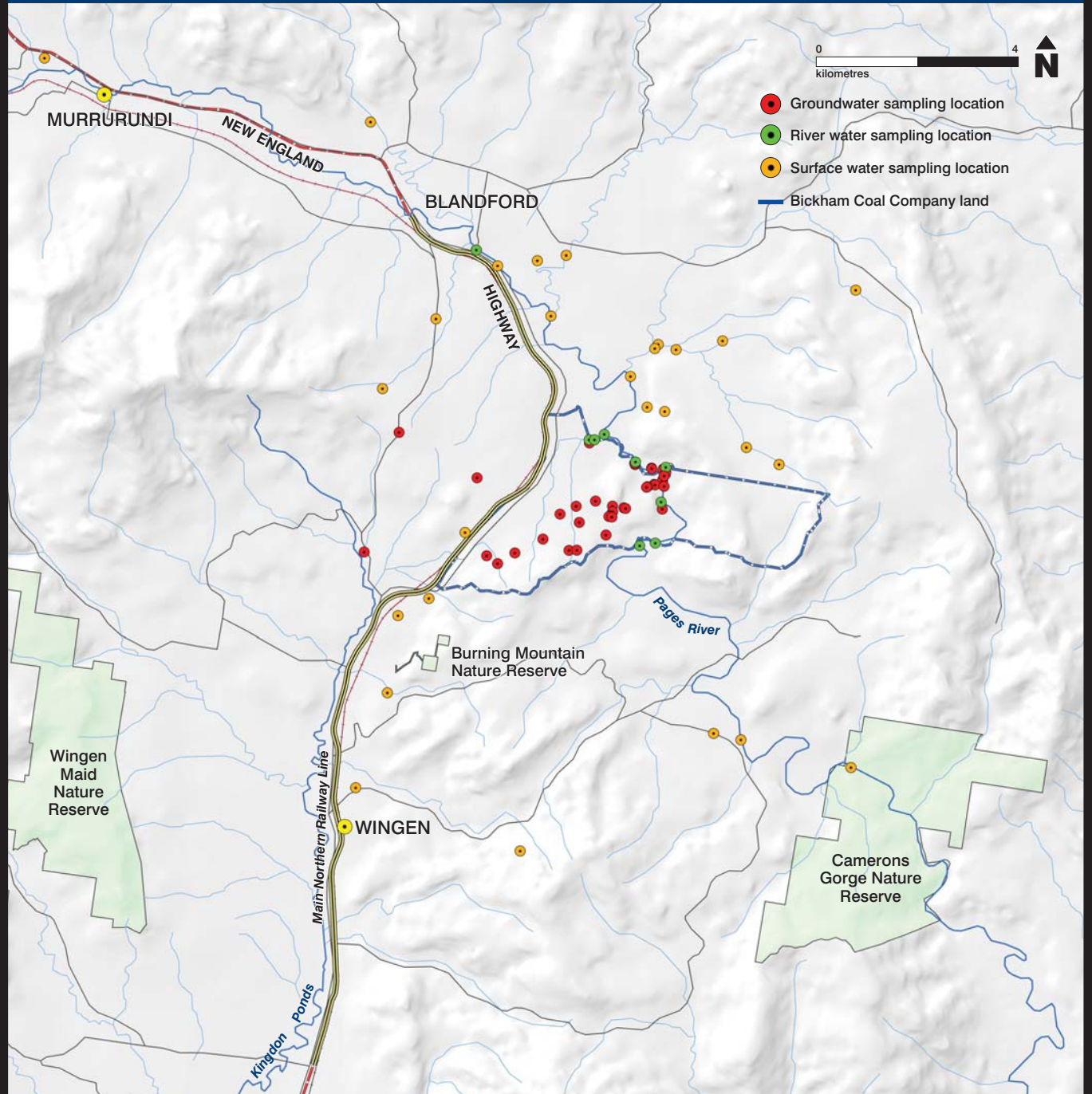
And will involve:

- Sampling and laboratory testing of surface water and groundwater samples
- Geological investigations
- Development of a comprehensive groundwater model
- Preparation of a Water Management Plan
- Flooding and surface water assessment
- Terrestrial and aquatic ecology

Details of the scope of works for the study can be downloaded from the company's website at www.bickhamcoal.com.au

When completed, the water resources assessment report will also be available on the website.

REGIONAL WATER SAMPLING SITES



PROJECT AREA WATER SAMPLING SITES

